

HELI

heliforklifts.co.nz

20-46t

CPCD200-460

G series Internal Combustion Counterbalanced Forklift Truck



A. Enduring and durable

- Durable structure design
- Easy and high efficient daily inspection
- Improved protection performance
- Improved cooling efficiency

B. ENERGY-SAVING

- High efficient matching, forceful power
- Hydraulic dynamic load variable control system(35-46t) or constant displacement system (20-32t)
- Light type design

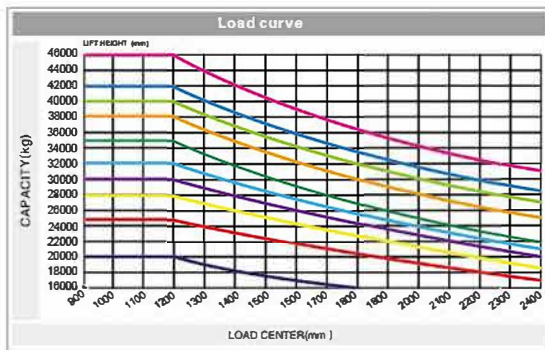
C. COMFORTABLE AND CONVENIENT

- Easy get on-off
- Smaller turning radius
- Superior view
- More comfort driving experience

D. SAFE AND EFFICIENT

- Better reliability
- OPS(optional)
- Wet type drive axle

Model		CPCD200	CPCD200 (Tilting Cab)	CPCD250	CPCD250 (Tilting Cab)	CPCD280	CPCD300	CPCD320	CPCD350	CPCD380	CPCD400	CPCD420	CPCD460
Technical parameters													
Rated load	t	20	20	25	25	28	30	32	35	38	40	42	46
Maximum liftingspeed (loaded/unloaded)	mm/s	280/310	280/310	280/310	280/310	280/310	280/310	280/310	240/260	280/340	280/340	240/320	240/320
Maximum speed (loaded/unloaded)	km/h	23/26	23/26	23/26	23/26	22/25	22/25	22/25	22/25	23/26	23/26	23/26	23/26
Gradeability (loaded)	%	27	27	27	27	27	27	27	27	36.6	35	30	30
Noise in the cab	dB(A)	78	79	78	79	78	78	78	79	76	76	76	76
Size parameters													
Overall length	mm	8742	8742	8742	8742	9200	9200	9200	9200	9870	9870	10370	10370
Overall width	mm	3040	3040	3040	3040	3460	3460	3460	3460	4120	4120	4120	4120
Overall height	mm	3995	3555	3995	3555	4120	4120	4120	4120	4600	4600	4850	4850
Load center distance	mm	1200	1200	1200	1200	1200	1200	1200	1200	1200	1200	1200	1200
Wheelbase	mm	4250	4250	4250	4250	4650	4650	4650	4650	5000	5000	5500	5500
Minimum underground clearance	mm	280	280	280	280	275	275	275	275	350	350	390	390
Seat height	mm	2793	2473	2793	2473	2850	2850	2850	2530	2590	2590	2620	2620
Turning radius(outside)	mm	5920	5920	5920	5920	6395	6395	6395	6395	6950	6950	7518	7518
Front track	mm	2200	2200	2200	2200	2490	2490	2490	2490	3090	3090	3090	3090
Rear track	mm	2510	2510	2510	2510	2440	2440	2440	2440	2840	2840	2840	2840
Mast height (retracted/extended)	mm	3995/5995	3495/4995	3995/5995	3495/4995	4120/6120	4120/6120	4120/6120	4120/6120	4600/6600	4600/6600	4830/6830	4830/6830
Mast lifting height	mm	4000	3000	4000	3000	4000	4000	4000	4000	4000	4000	4000	4000
Mast tilting angle (forward/backward)	deg	6/10	6/10	6/10	6/10	6/10	6/10	6/10	6/10	6/10	6/10	6/10	6/10
Fork dimension (length*width*thickness)	mm	2440 × 250 × 110	2440 × 250 × 110	2440 × 250 × 110	2440 × 250 × 110	2440 × 300 × 115	2440 × 300 × 115	2440 × 300 × 115	2440 × 300 × 120	2440 × 300 × 145	2440 × 300 × 145	2440 × 300 × 145	2440 × 300 × 145
Fork adjusting range (Outside of Fork)	mm	820-2700	820-2700	820-2700	820-2700	920-2850	920-2850	920-2850	920-2850	1250-2850	1250-2850	1250-2850	1250-2850



- 20t
- 25t
- 28t
- 30t
- 32t
- 35t
- 38t
- 40t
- 42t
- 46t

