

RX 60 Technical Data Electric Forklift Truck

[RX 60-25 \(Plus\)|Li-Ion](#)

[RX 60-25 \(Plus\)/600|Li-Ion](#)

[RX 60-25L \(Plus\)/600|Li-Ion](#)

[RX 60-30 \(Plus\)|Li-Ion](#)

[RX 60-30L \(Plus\)|Li-Ion](#)

[RX 60-30L \(Plus\)/600|Li-Ion](#)

[RX 60-35L \(Plus\)|Li-Ion](#)



RX 60-25/35 Electric Forklift Truck
The Accelerator

This specification sheet, which conforms to VDI guideline 2198, provides the technical values for the standard equipment only.
Different tyres, other masts, the use of accessories, etc. may result in other values.



| | | STILL | STILL | STILL | STILL | STILL | STILL | STILL | STILL | | |
|----------------------|------------------------------------------------------------------|--------------------------------------------------------------------------|--------------------|---------------------------------|-------------------------------------|--------------------------------------|-----------------------------------|-----------------------------------|--------------------------------------|-----------------------------------|-------------------|
| Distinguishing marks | 1.1 | Manufacturer | | | | | | | | | |
| | 1.2 | Manufacturer's type designation | | RX 60-25 (Plus) Li-Ion | RX 60-25 (Plus)/600 Li-Ion | RX 60-25L (Plus)/600 Li-Ion | RX 60-30 (Plus) Li-Ion | RX 60-30L (Plus) Li-Ion | RX 60-30L (Plus)/600 Li-Ion | RX 60-35L (Plus) Li-Ion | |
| | 1.2.1 | Manufacturer model number | | 6301 | 6302 | 6304 | 6305 | 6307 | 6308 | 6309 | |
| | 1.3 | Drive | | Electric | Electric | Electric | Electric | Electric | Electric | Electric | |
| | 1.4 | Operation | | Seated | Seated | Seated | Seated | Seated | Seated | Seated | |
| | 1.5 | Load capacity/load | Q | kg | 2500 | 2500 | 2500 | 3000 | 3000 | 3000 | 3500 |
| | 1.6 | Load centre | c | mm | 500 | 600 | 600 | 500 | 500 | 600 | 500 |
| | 1.8 | Load spacing | x | mm | 455 | 460 | 460 | 468 | 468 | 468 | 468 |
| | 1.9 | Wheel base | y | mm | 1645 | 1645 | 1797 | 1652 | 1797 | 1797 | 1797 |
| Weights | 2.1 | Service weight incl. battery | | kg | 4599 | 4821 | 5019 | 5040 | 5063 | 5308 | 5500 |
| | 2.2 | Axle load, laden | front/rear | kg | 6317/782 | 6421/900 | 6478/1041 | 7163/877 | 7257/806 | 7419/889 | 8042/958 |
| | 2.3 | Axle load, unladen | front/rear | kg | 2370/2229 | 2315/2506 | 2508/2511 | 2411/2629 | 2646/2417 | 2641/2667 | 2662/2838 |
| Tyres/chassis | 3.1 | Tyres | | | Superelastic | Superelastic | Superelastic | Superelastic | Superelastic | Superelastic | |
| | 3.2 | Tyre size | front | mm | 225/75-10 (23x9-10) | 225/75-10 (23x9-10) | 225/75-10 (23x9-10) | 250/60-12 (23x10-12) | 250/60-12 (23x10-12) | 315/45-12 | 315/45-12 |
| | 3.2 | Tyre size | rear | mm | 180/70-8 (18x7-8) | 180/70-8 (18x7-8) | 180/70-8 (18x7-8) | 180/70-8 (18x7-8) | 180/70-8 (18x7-8) | 180/70-8 (18x7-8) | 180/70-8 (18x7-8) |
| | 3.5 | Number of wheels (x = driven) | front/rear | | | 2x/2 | 2x/2 | 2x/2 | 2x/2 | 2x/2 | 2x/2 |
| | 3.6 | Track width | front/rear | mm | 992/900 | 992/900 | 992/900 | 950/900 | 950/900 | 1002/900 | 1002/900 |
| | 4.1 | Angle of mast/fork carriage | forward/backward | ° | 7/7 | 7/7 | 7/7 | 7/7 | 7/7 | 7/7 | 7/7 |
| Basic dimensions | 4.2 | Height of mast | retracted/extended | mm | 2225/3700 | 2225/3700 | 2225/3700 | 2225/3850 | 2225/3850 | 2225/3850 | 2225/3850 |
| | 4.3 | Free lift | | mm | 160 | 160 | 160 | 160 | 160 | 160 | 160 |
| | 4.4 | Lift ¹ | | mm | 3066 | 3066 | 3066 | 3066 | 3066 | 3066 | 3066 |
| | 4.7 | Height above protective roof (low variant) | | mm | 2225 (2135) | 2225 (2135) | 2225 (2135) | 2225 (2135) | 2225 (2135) | 2225 (2135) | 2225 (2135) |
| | 4.8 | Seat height in relation to SIP (low variant) | | mm | 1235 | 1235 | 1235 | 1235 | 1235 | 1235 | 1235 |
| | 4.12 | Coupling height | | mm | 484 | 484 | 484 | 484 | 484 | 484 | 484 |
| | 4.19 | Total length | | mm | 3413 | 3618 | 3770 | 3433 | 3578 | 3778 | 3778 |
| | 4.20 | Length including fork backs | | mm | 2413 | 2418 | 2570 | 2433 | 2578 | 2578 | 2578 |
| | 4.21 | Total width | | mm | 1200 | 1200 | 1200 | 1200 | 1200 | 1300 | 1300 |
| | 4.22 | Fork dimensions | s/e/l | mm | 40/100/1000 | 45/100/1200 | 45/100/1200 | 50/100/1000 | 50/100/1000 | 50/100/1200 | 50/100/1000 |
| | 4.23 | Fork carriage ISO 2328, Class/form A, B | | | ISO II A | ISO II A | ISO II A | ISO III A | ISO III A | ISO III A | ISO III A |
| | 4.24 | Fork carriage width | | mm | 1150 | 1150 | 1150 | 1150 | 1150 | 1150 | 1150 |
| | 4.31 | Ground clearance under mast, with load | | mm | 116 | 116 | 116 | 114 | 114 | 116 | 115 |
| | 4.32 | Ground clearance centre wheel base | | mm | 127 | 126 | 126 | 126 | 125 | 126 | 126 |
| | 4.34.1 | Working aisle width with pallet 1000 x 1200 crossways ^{3,4} | | mm | 3700 | 3705 | 3905 | 3742 | 3913 | 3941 | 3941 |
| | 4.34.2 | Working aisle width with pallet 800 x 1200 lengthways ^{3,4} | | mm | 3890 | 3895 | 4116 | 3940 | 4124 | 4141 | 4141 |
| | 4.35 | Turning radius | | mm | 2035 | 2035 | 2245 | 2070 | 2245 | 2273 | 2273 |
| | 4.36 | Smallest pivoting distance | | mm | 428 | 428 | 593 | 491 | 593 | 649 | 649 |
| Performance data | 5.1 | Driving speed (Blue-Q/standard/sprint) | with load | km/h | 18/18/20 | 18/18/20 | 18/18/20 | 18/18/20 | 18/18/20 | 18/18/20 | 18/18/20 |
| | 5.1 | Driving speed (Blue-Q/standard/sprint) | without load | km/h | 18/18/21 | 18/18/21 | 18/18/21 | 18/18/21 | 18/18/21 | 18/18/21 | 18/18/21 |
| | 5.2 | Lifting speed (plus*/standard performance) | with load | m/s | 0.65//0.56 | 0.65//0.56 | 0.65//0.56 | 0.57//0.49 | 0.57//0.49 | 0.57//0.49 | 0.53//0.44 |
| | 5.2 | Lifting speed (plus*/standard performance) | without load | m/s | 0.66//0.60 | 0.66//0.60 | 0.66//0.60 | 0.57//0.51 | 0.57//0.51 | 0.57//0.51 | 0.57//0.51 |
| | 5.3 | Lowering speed | with load | m/s | 0.50 | 0.50 | 0.50 | 0.50 | 0.50 | 0.50 | 0.50 |
| | 5.3 | Lowering speed | without load | m/s | 0.45 | 0.45 | 0.45 | 0.43 | 0.43 | 0.43 | 0.43 |
| | 5.5 | Drawbar pull (plus*/standard performance) ⁵ | with load | N | 10800//8140 | 10760//8016 | 10720//7985 | 10430//7740 | 10490//7737 | 10400//7695 | 10300//7590 |
| | 5.5 | Drawbar pull (plus*/standard performance) ⁵ | without load | N | 10760//8100 | 10670//8110 | 10690//8110 | 10720//8100 | 10730//8106 | 10686//8055 | 10650//8015 |
| | 5.6 | Max. drawbar pull (plus*/standard performance) ⁵ | with load | N | 21360//17390 | 21340//17370 | 21311//17354 | 20990//17020 | 20990//17020 | 20960//16990 | 20900//16920 |
| | 5.6 | Max. drawbar pull (plus*/standard performance) ⁵ | without load | N | 18125//17120 | 17636//17073 | 18370//17071 | 18360//17140 | 20250//17156 | 20160//17117 | 20290//17170 |
| | 5.7 | Gradeability (plus*/standard performance) ⁵ | with load | % | 23.5//17.1 | 22.6//16.5 | 22.0//16.0 | 20.1//14.6 | 20.1//14.6 | 19.4//14.1 | 17.8//12.9 |
| | 5.7 | Gradeability (plus*/standard performance) ⁵ | without load | % | 29.5//26.6 | 27.4//27.4 | 28.0//24.2 | 27.4//24.2 | 30.6//24.1 | 29.1//22.8 | 28.2//21.9 |
| 5.8 | Max. gradeability (plus*/standard performance) ⁵ | with load | % | 31.9//25.5 | 30.8//24.7 | 30//24 | 27.4//21.9 | 27.3//21.9 | 26.4//21.1 | 24.2//20.6 | |
| 5.8 | Max. gradeability (plus*/standard performance) ⁵ | without load | % | 29.5//29.5 | 27.4//27.5 | 28//29.2 | 27.4//27.4 | 30.6//30.6 | 29.1//29.1 | 28.2//28.2 | |
| 5.9 | Acceleration time 15 m (plus*/standard performance) | with load | s | 5.4//6.5 | 5.4//6.5 | 5.5//6.6 | 5.5//6.6 | 5.5//6.6 | 5.7//6.3 | 5.7//6.3 | |
| 5.9 | Acceleration time 15 m (plus*/standard performance) | without load | s | 5.0//5.5 | 5.0//5.5 | 5.0//5.6 | 5.0//5.6 | 5.0//5.6 | 5.0//5.4 | 5.0//5.4 | |
| 5.10 | Service brake | | | | Hydraulically actuated disc brake | Hydraulically actuated disc brake | Hydraulically actuated disc brake | Hydraulically actuated disc brake | Hydraulically actuated disc brake | Hydraulically actuated disc brake | |
| Electric engine | 6.1 | Drive motor, output with S2 60 min (plus*/standard performance) | | kW | 2x 10.5//2x 8.5 | 2x 10.5//2x 8.5 | 2x 10.5//2x 8.5 | 2x 10.5//2x 8.5 | 2x 10.5//2x 8.5 | 2x 10.5//2x 8.5 | 2x 10.5//2x 8.5 |
| | 6.2 | Lifting motor, output with S3 15% (plus*/standard performance) | | kW | 25//20 | 25//20 | 25//20 | 25//20 | 25//20 | 25//20 | 25//20 |
| | 6.3 | Battery according to DIN 43531/35/36 A, B, C, no | | | DIN 43536 A | DIN 43536 A | DIN 43536 A | DIN 43536 A | DIN 43536 A | DIN 43536 A | DIN 43536 A |
| | 6.4 | Battery voltage | U | V | 80 | 80 | 80 | 80 | 80 | 80 | 80 |
| | 6.4.1 | Battery capacity | K ₅ | Ah | 560 (620) | 560 (620) | 700 (775) | 560 (620) | 700 (775) | 700 (775) | 700 (775) |
| | 6.5 | Battery weight | | kg | 1558 | 1558 | 1863 | 1558 | 1863 | 1863 | 1863 |
| | 6.6 | Energy consumption EN 16796 (plus*/standard performance) | | kWh/h | 6.0//6.0 | 6.2//6.2 | 6.3//6.3 | 6.6//6.5 | 6.6//6.6 | 6.7//6.7 | 7.1//7.1 |
| | 6.7 | Handling rate (plus*/standard performance) | | t/h | 176//169 | 176//169 | 176//169 | 228//222 | 228//222 | 228//222 | 258//245 |
| 6.8 | Energy consumption at handling rate (plus*/standard performance) | | kWh/h | 7.1//6.6 | 7.2//6.8 | 7.4//6.9 | 7.8//7.3 | 7.8//7.3 | 8.0//7.5 | 8.6//8.0 | |
| Misc. | 10.1 | Working pressure for accessory equipment | | bar | 250 | 250 | 250 | 250 | 250 | 250 | 250 |
| | 10.2 | Oil volume for accessory equipment | | l/min | 55 | 55 | 55 | 55 | 55 | 55 | 55 |
| | 10.7 | Sound pressure level L _{pAZ} (operator's position) ² | | dB(A) | 70 | 70 | 70 | 70 | 70 | 70 | 70 |
| | 10.7.1 | Human vibrations: acceleration in accordance with EN 13059 | | m/s ² | 0.57 | 0.57 | 0.57 | 0.57 | 0.57 | 0.57 | 0.57 |
| 10.8 | Trailer coupling, item/DIN type | | | Bolt | Bolt | Bolt | Bolt | Bolt | Bolt | Bolt | |

¹ The specified nominal lift takes into consideration the tyre deflection and tolerances of the tyre diameter

² Without cab. Different values with cab

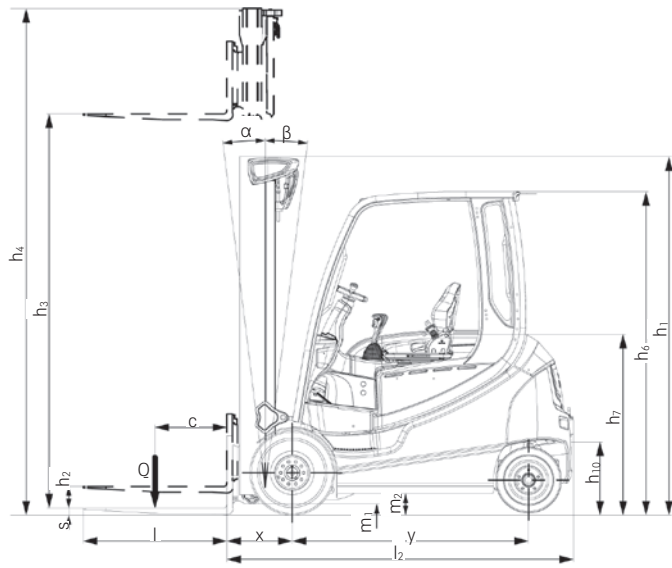
³ Fork overhang not included

⁴ For telescopic, HiLo and triplex mast

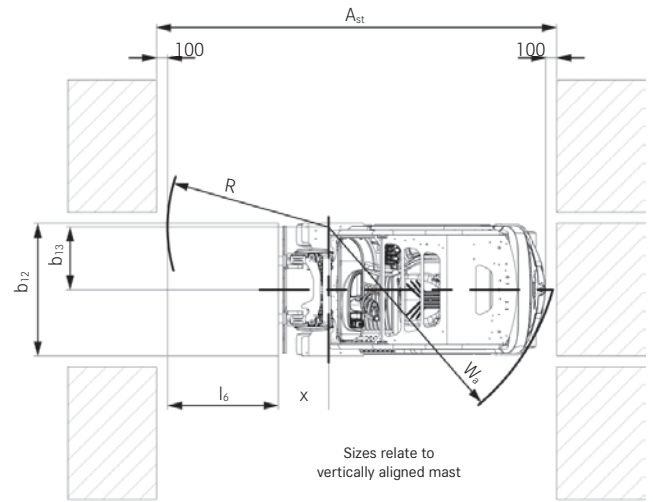
⁵ For the complete forklift truck system

*Plus performance = high performance variant

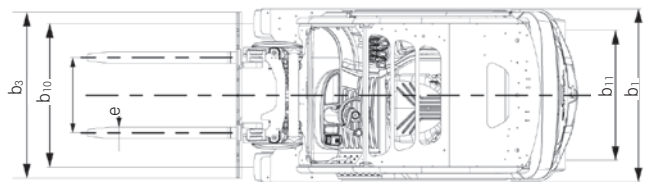
RX 60-25/35 Electric Forklift Truck
 Technical Drawings



Side view



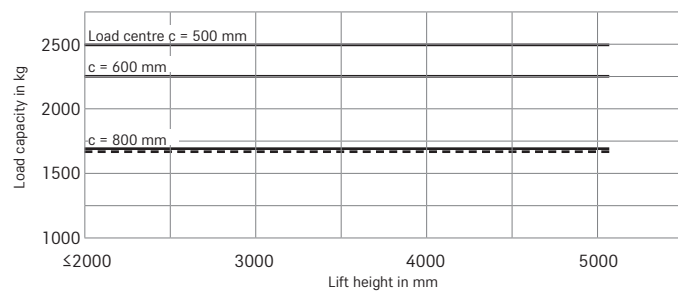
Top view



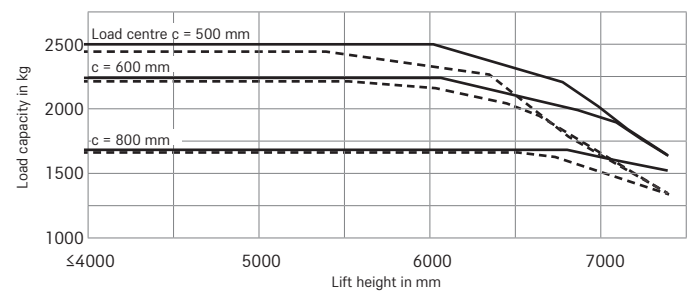
Top view

Basic Load Capacities

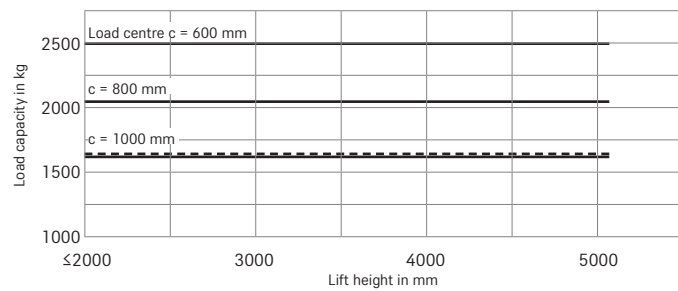
RX 60-25 Telescopic/HiLo mast



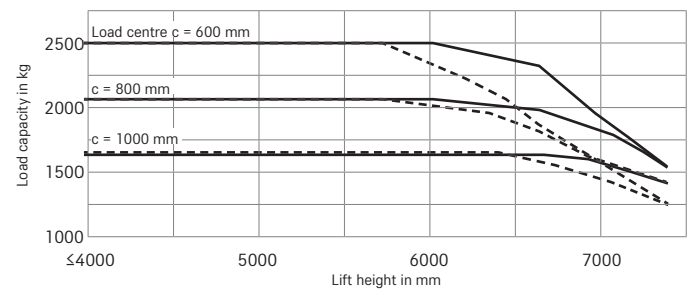
RX 60-25 Triplex mast



RX 60-25/600 Telescopic/HiLo mast



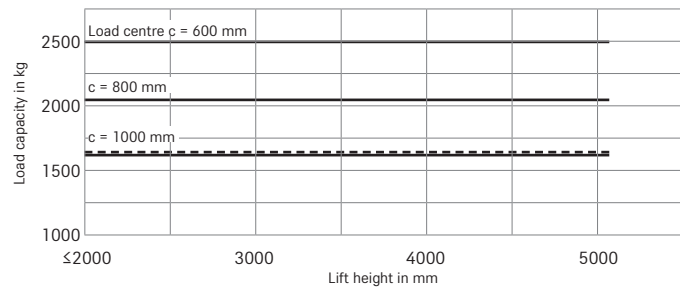
RX 60-25/600 Triplex mast



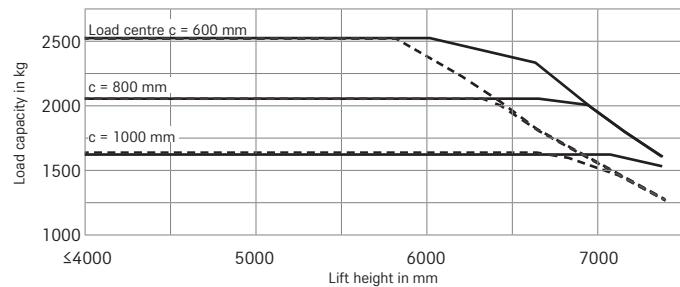
RX 60-25/35 Electric Forklift Truck

Basic Load Capacities

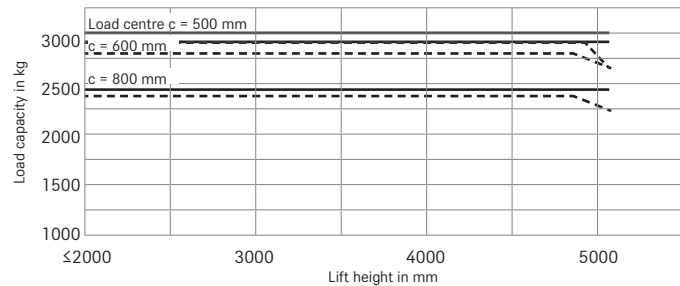
RX 60-25L/600 Telescopic/HiLo mast



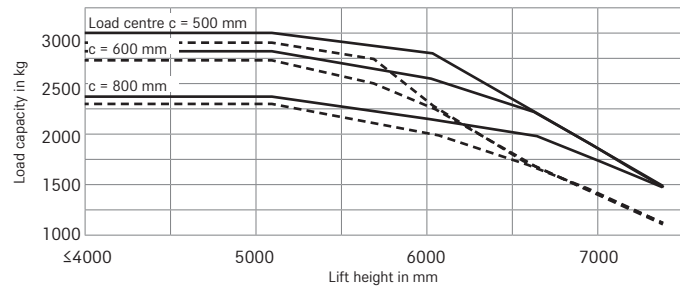
RX 60-25L/600 Triplex mast



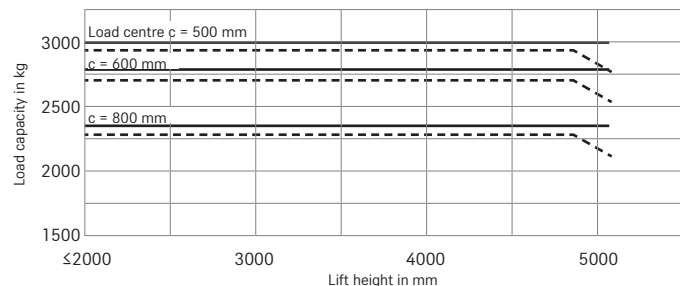
RX 60-30 Telescopic/HiLo mast



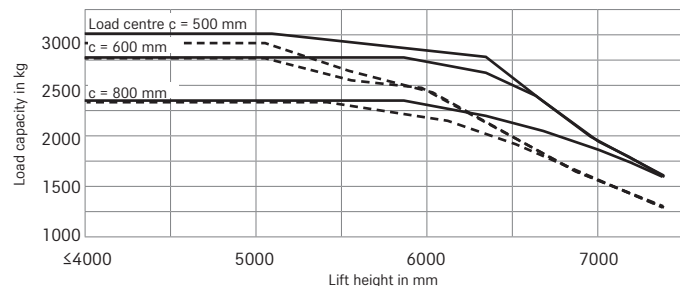
RX 60-30 Triplex mast



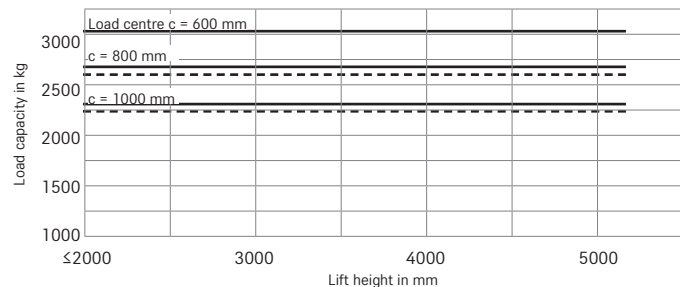
RX 60-30L Telescopic/HiLo mast



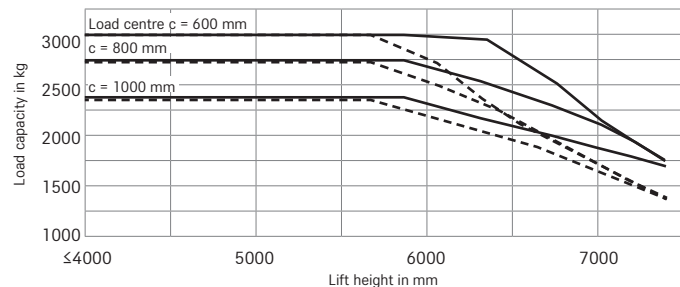
RX 60-30L Triplex mast



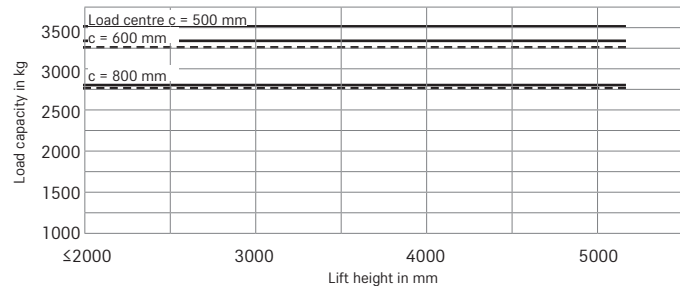
RX 60-30L/600 Telescopic/HiLo mast



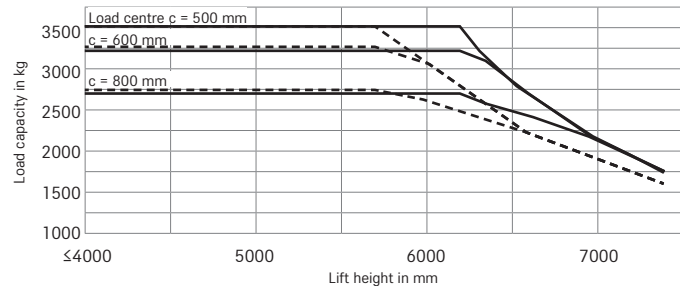
RX 60-30L/600 Triplex mast



RX 60-35L Telescopic/HiLo mast



RX 60-35L Triplex mast



— without side shifter - - - with fitted side shifter

RX 60-25/35 Electric Forklift Truck
Mast Tables



| | | | | Telescopic mast | | | | | | | | | | HiLo mast | | | | | Triplex mast | | | | | | | | | | | | |
|-------------|------------------------|--------------------------------------|--------------------------------------|-------------------------|----------------|-----------|------|------|------|------|------|------|------|-------------------------|-----------|-----------|------|------|-------------------------|-----------|-----------|------|------|------|------|------|------|------|------|------|------|
| | | | | 2770 | 2870 | 3020 | 3170 | 3270 | 3670 | 4170 | 4570 | 5070 | 2890 | 2990 | 3090 | 3290 | 3690 | 4090 | 4590 | 4290 | 4440 | 4590 | 4890 | 5190 | 5390 | 5540 | 6040 | 6640 | 7390 | | |
| RX 60-25 | RX 60-25 | Nominal lift | h ₃ | mm | 2770 | 2870 | 3020 | 3170 | 3270 | 3670 | 4170 | 4570 | 5070 | 2890 | 2990 | 3090 | 3290 | 3690 | 4090 | 4590 | 4290 | 4440 | 4590 | 4890 | 5190 | 5390 | 5540 | 6040 | 6640 | 7390 | |
| | | Height | h ₁ | mm | 2075 | 2125 | 2200 | 2275 | 2325 | 2525 | 2775 | 2975 | 3225 | 2075 | 2125 | 2175 | 2275 | 2475 | 2675 | 2925 | 2075 | 2125 | 2175 | 2275 | 2375 | 2475 | 2525 | 2725 | 2925 | 3175 | |
| | | Free lift 4 roller fork carriage | h ₂ | mm | 160 | 160 | 160 | 160 | 160 | 160 | 160 | 160 | 160 | 160 | 1443 | 1493 | 1543 | 1643 | 1843 | 2043 | 2293 | 1443 | 1493 | 1543 | 1643 | 1743 | 1843 | 1893 | 2093 | 2293 | 2543 |
| | | Max. height, 4 roller fork carriage | h ₄ | mm | 3406 | 3506 | 3656 | 3806 | 3906 | 4306 | 4806 | 5206 | 5706 | 3548 | 3648 | 3748 | 3948 | 4348 | 4748 | 5248 | 4961 | 5111 | 5261 | 5561 | 5861 | 6061 | 6211 | 6711 | 7311 | 8061 | |
| | | Tilt angle | forward/backward | α/β | 7/7 | | | | | | | | | | 7/7 | | | | | 7/7 | | | | | | | | | | | |
| | Adjustable fork spread | | mm | 216/368/445/521/673/760 | | | | | | | | | | 216/368/445/521/673/760 | | | | | 216/368/445/521/673/760 | | | | | | | | | | | | |
| | RX 60-25/600 | RX 60-25L/600 | Tyres | rear | | 180/70-8 | | | | | | | | | | 180/70-8 | | | | | 180/70-8 | | | | | | | | | | |
| | | | Track | rear | mm | 900 | | | | | | | | | | 900 | | | | | 900 | | | | | | | | | | |
| | | | Tyres (standard performance) | front | | 225/75-10 | | | | | | | | | | 225/75-10 | | | | | 225/75-10 | | | | | | | | | | |
| | | | Tracks (standard performance) | front | b ₁ | mm | 992 | | | | | | | | | | 992 | | | | | 992 | | | | | | | | | |
| | | | Maximum width (standard performance) | | mm | 1200 | | | | | | | | | | 1200 | | | | | 1303 | | | | | | | | | | |
| | | RX 60-25L/600 | Tyres (plus performance*) | front | | 250/60-12 | | | | | | | | | | 250/60-12 | | | | | 250/60-12 | | | | | | | | | | |
| | | | Track (plus performance*) | front | b ₁ | mm | 952 | | | | | | | | | | 952 | | | | | 1050 | | | | | | | | | |
| | | | Maximum width (plus performance*) | | mm | 1200 | | | | | | | | | | 1200 | | | | | 1929 | | | | | | | | | | |
| | | | Tyres | rear | | 180/70-8 | | | | | | | | | | 180/70-8 | | | | | 180/70-8 | | | | | | | | | | |
| Track | | | rear | mm | 900 | | | | | | | | | | 900 | | | | | 900 | | | | | | | | | | | |
| RX 60-30/35 | RX 60-30 | Tyres (standard performance) | front | | 225/75-10 | | | | | | | | | | 250/60-12 | | | | | 225/75-10 | | | | | | | | | | | |
| | | Tracks (standard performance) | front | b ₁ | mm | 992 | | | | | | | | | | 1050 | | | | | 992 | | | | | | | | | | |
| | | Maximum width (standard performance) | | mm | 1200 | | | | | | | | | | 1296 | | | | | 1200 | | | | | | | | | | | |
| | | Tyres (plus performance*) | front | | 250/60-12 | | | | | | | | | | 250/60-12 | | | | | 250/60-12 | | | | | | | | | | | |
| | | Track (plus performance*) | front | mm | 992 | | | | | | | | | | 1050 | | | | | 992 | | | | | | | | | | | |
| | RX 60-30L/600 | Maximum width (plus performance*) | b ₁ | mm | 1200 | | | | | | | | | | 1296 | | | | | 1200 | | | | | | | | | | | |
| | | Tyres | rear | | 180/70-8 | | | | | | | | | | 180/70-8 | | | | | 180/70-8 | | | | | | | | | | | |
| | | Tyres (standard performance) | front | | 225/75-10 | | | | | | | | | | 250/60-12 | | | | | 225/75-10 | | | | | | | | | | | |
| | | Tracks (standard performance) | front | b ₁ | mm | 992 | | | | | | | | | | 1050 | | | | | 992 | | | | | | | | | | |
| | | Maximum width (standard performance) | | mm | 1200 | | | | | | | | | | 1296 | | | | | 1200 | | | | | | | | | | | |
| RX 60-30/35 | RX 60-30L | Tyres (plus performance*) | front | | 315/45-12 | | | | | | | | | | 315/45-12 | | | | | 315/45-12 | | | | | | | | | | | |
| | | Track (plus performance*) | front | mm | 1004 | | | | | | | | | | 1100 | | | | | 1004 | | | | | | | | | | | |
| | | Maximum width (plus performance*) | b ₁ | mm | 1303 | | | | | | | | | | 1399 | | | | | 1303 | | | | | | | | | | | |
| | | Tyres | rear | | 180/70-8 | | | | | | | | | | 180/70-8 | | | | | 180/70-8 | | | | | | | | | | | |
| | | Tyres (standard performance) | front | | 315/45-12 | | | | | | | | | | 315/45-12 | | | | | 315/45-12 | | | | | | | | | | | |
| | RX 60-30L/600 | Track | front/rear | mm | 1004/900 | | | | | | | | | | 1100/900 | | | | | 1004/900 | | | | | | | | | | | |
| | | Maximum width | b ₁ | mm | 1303 | | | | | | | | | | 1399 | | | | | 1303 | | | | | | | | | | | |

*Plus performance = high performance variant

Gradients

Maximum distance that can be driven in 60 minutes.

Example: with a load of 2,500 kg and an gradient of 15%, an RX 60-25 (standard performance) can drive a distance of 610 m up to ten times per hour.

| Standard Performance | Gradient | Maximum distance in m | | | | | | | |
|----------------------|----------|-----------------------|--------------|---------------|----------|-----------|---------------|-----------|--|
| | | RX 60-25 | RX 60-25/600 | RX 60-25L/600 | RX 60-30 | RX 60-30L | RX 60-30L/600 | RX 60-35L | |
| With load | 20% | 810 | 790 | 770 | 730 | 720 | 690 | 610 | |
| | 15% | 6100 | 6000 | 5800 | 5200 | 5180 | 5050 | 4350 | |
| | 10% | 7550 | 7390 | 7340 | 7140 | 7140 | 6790 | 6500 | |
| | 5% | 10400 | 10300 | 10200 | 10100 | 10100 | 9850 | 9600 | |
| Without load | 25% | 1250 | 1210 | 1170 | 1110 | 1100 | 1070 | 980 | |
| | 20% | 6850 | 6710 | 6610 | 6570 | 6550 | 6460 | 6280 | |
| | 15% | 9900 | 9600 | 9400 | 9360 | 9350 | 9290 | 9200 | |
| | 10% | 12580 | 12450 | 12350 | 12340 | 12330 | 12240 | 12100 | |

| Plus Performance* | Gradient | Maximum distance in m | | | | | | | |
|-------------------|----------|-----------------------|--------------|---------------|----------|-----------|---------------|-----------|--|
| | | RX 60-25 | RX 60-25/600 | RX 60-25L/600 | RX 60-30 | RX 60-30L | RX 60-30L/600 | RX 60-35L | |
| With load | 20% | 2350 | 2150 | 2080 | 1860 | 1850 | 1420 | 1250 | |
| | 15% | 5600 | 5305 | 5130 | 4620 | 4630 | 4440 | 4200 | |
| | 10% | 9120 | 8910 | 8710 | 8130 | 8120 | 7910 | 7240 | |
| | 5% | 14270 | 14180 | 14020 | 13300 | 13200 | 12800 | 12000 | |
| Without load | 25% | 1500 | 1410 | 1380 | 1380 | 1380 | 1310 | 1210 | |
| | 20% | 7820 | 7470 | 7110 | 7090 | 7080 | 6770 | 6460 | |
| | 15% | 13690 | 12880 | 12630 | 12580 | 12440 | 11960 | 11610 | |
| | 10% | 17400 | 17100 | 16980 | 16780 | 16760 | 16690 | 16480 | |

Dry rough concrete = coefficient of friction 0.80
Battery: standard as per specification sheet
Speed is variable

*Plus performance = high performance variant

RX 60-25/35 Electric Forklift Truck
Detailed Photos



Full cab for outdoor use in all weathers



Optimum availability due to fast and safe battery change



Slim mast ensures excellent view of the forks and extremely high safety standards



Safe and precise loading and unloading thanks to clear view forwards and upwards



Spacious driver's workstation for safe, fatigue-free working



Excellent view of the prongs



High level of safety thanks to large, non-slip steps for easy entry



Safe, intuitive operation with the STILL Easy Control display and control module

RX 60-25/35 Electric Forklift Truck
The Accelerator



RX 60-25/35 Electric Forklift Truck The Accelerator

Exceptional performance: highest handling performance of its class

Easily accessible: highest range with one battery charge

Ideal workstation: spacious cabin with STILL Easy Control on-board computer



Make the most of the smart performance offered by an exceptional accelerator. Right from the start the RX 60-25/35 will win over any operator with its perfect balance of power, ergonomics, manoeuvrability and energy efficiency. It is not only a high performer – it is one of the very best: the RX 60-25/35 boasts optimum handling rates in weight classes of up to 3.5 tonnes. At the same time, this intralogistics powerhouse can reach speeds of 21 km/h and is a top performer when it comes to range, offering the highest range per battery charge in this segment. Choose our STILL lithium-ion technology and you can run three shifts with your forklift truck without a replacement battery.

Whatever your needs, the RX 60 can be operated intuitively and precisely in any situation. And thanks to the quick-start mode, this nimble truck is ready to start work as soon as you sit down in the spacious driver's cab. Here, you will also find yet another outstanding feature – the STILL Easy Control on-board computer. This tool gives you direct access to key performance functions and provides a constant overview of all the relevant vehicle information. Go electric with a forklift truck that delivers the very best performance every second and in every application.

The 'Simply Efficient' factors: Performance attributes as a measure of economic efficiency



Simply easy

- Intuitive handling: standard, easy-to-use operating concept across the whole RX product line
- Efficiency-enhancing: easy entry into a highly ergonomic driver's cab
- STILL Easy Control on-board computer: all relevant information at a glance and performance functions just a click away
- Ultra-fast: easy-to-operate lateral battery change



Simply powerful

- Intralogistics powerhouse: highest handling performance of its class
- Performance boost: sprint mode for peak performance at the touch of a button
- Optimum energy efficiency: exceptionally long range with each battery charge
- Lift and accelerate faster than ever: available as a high performance variant with extra-powerful drive and lift motors
- Intelligent support: traction control and other assistance functions
- Ready at all times: optional STILL lithium-ion technology for maximum availability



Simply safe

- Safe and precise handling: high-precision hydraulics and agile driving dynamics
- Safe entry: large handle, anti-slip rubber mat and wide step
- Optimal panoramic view: slim mast and extra-large windows
- Systematic safety: optional pre-shift check on the display to help with the daily safety inspection
- Safety for every application: wide range of additional equipment options – from a direction indicator on the display to the Safety Light 4Plus safety lighting, as well as Curve Speed Control for automatic speed reduction when cornering



Simply flexible

- Flexible control options: multi-lever, mini-lever, Fingertip or Joystick 4Plus
- Adjustable performance dynamics: parameters such as driving and lifting speed can be adjusted to personal preferences at the touch of a button
- Operating power tailored to your specifications: wide variety of equipment options for every application



Simply connected

- Optimum networking: optional interface for integration into fleet management software such as STILL neXXt fleet
- Controlled use: optional access control protects against incorrect operation

RX 60-25/35 Electric Forklift Truck

Equipment Variants



| | RX 60-25/-30 | RX 60-30L/-35L | RX 60-25/-25L/-30L with LSP 600 mm |
|------------------------------------------------------------------------------------------------------------------------------------------------------|--------------|----------------|------------------------------------|
| | ● | ● | ● |
| Operating costs kept low thanks to low energy consumption and long service intervals | ● | ● | ● |
| Weather-protected, canvas or full cab | ○ | ○ | ○ |
| Drive-in overhead guard with makrolon roof | ○ | ○ | ○ |
| Driver cab suitable for container loading (height: approx. 2135 mm) | ○ | ○ | ○ |
| Tinted front windscreen, rear and roof windows made of either green-tinted or makrolon laminated safety glass, plus windscreen wiper and wash system | ○ | ○ | ○ |
| Splash-proof operating unit featuring colour display, function buttons and menu navigation | ● | ● | ● |
| MSG 65 Grammer seat with leatherette cover | ● | ● | ● |
| Seat with textile cover, airsprung, leatherette cover, lumbar support, height-adjustable back extension, heated seat | ○ | ○ | ○ |
| Swivel seat can be rotated to the right | ○ | ○ | ○ |
| Grab handle on front and back of protective roof | ● | ● | ● |
| Horizontal spring plate for driver's seat to minimise human vibrations | ○ | ○ | ○ |
| Radio/MP3 player with USB connection and Bluetooth | ○ | ○ | ○ |
| Electrical heating 2000 W incl. defrosting blaster | ○ | ○ | ○ |
| Air conditioning | ○ | ○ | ○ |
| Dual-pedal control | ○ | ○ | ○ |
| Adjustable roof window for instant cabin ventilation | ○ | ○ | ○ |
| Clamp mount for mobile phone, mounted adjustably on the overhead guard bar | ○ | ○ | ○ |
| Raised driver's workplace (208 mm) for optimal view over bulky loads, e.g. beverage industry | ○ | ○ | ○ |
| Free view mast available in telescopic, HiLo and triplex versions | ○ | ○ | ○ |
| Load backrest | ○ | ○ | ○ |
| Mast vertical position at the push of a button | ○ | ○ | ○ |
| Hydraulic accumulator in the lifting cylinder to attenuate pressure peaks in the hydraulic system | ○ | ○ | ○ |
| Bellows protect the tilt cylinder from dust and moisture | ○ | ○ | ○ |
| Fork wear protection | ○ | ○ | ○ |
| Various fork carriage widths, integrated sideshifting and fork adjusting devices | ○ | ○ | ○ |
| Display showing tilt angle and cushioned lowering in the tilt end positions | ○ | ○ | ○ |
| Single tyres, superelastic, SIT system | ● | ● | ● |
| Single tyres, natural colours, superelastic, SIT system | ○ | ○ | ○ |
| Twin tyres, superelastic, SIT system, black or natural colours | ○ | ○ | ○ |
| Proportional valve technology for especially sensitive movements | ○ | ○ | ○ |
| Cold store version with special low temperature oil | ○ | ○ | ○ |
| Multi-lever operation | ● | ● | ● |
| Armrest with mini-levers, Fingertip or Joystick 4Plus | ○ | ○ | ○ |
| Shake function for easy tipping of containers | ○ | ○ | ○ |
| Three fixed and two freely configurable driving programs, Blue-Q energy saving mode | ● | ● | ● |
| Display showing energy consumption and remaining driving time based on current charge | ● | ● | ● |
| Maintenance-free drives for driving, steering and lifting; components enclosed to protect against dust and moisture | ● | ● | ● |
| Li-Ion battery exchangeable 1:1 | ○ | ○ | ○ |
| Sprint mode for highest handling performance at the push of a button | ● | ● | ● |
| High performance variant (plus) | ○ | ○ | ○ |
| On-board charger | ○ | ○ | ○ |
| Fast-charging access | ○ | ○ | ○ |
| Wear-free disc brakes that run in an oil bath | ● | ● | ● |
| Energy recovery when braking | ● | ● | ● |
| Automatic, electro-hydraulic parking brake | ● | ● | ● |
| Protective grille roof | ○ | ○ | ○ |
| EasyBelt restraint system for quick and safe fastening and unfastening | ○ | ○ | ○ |
| Sauerermann restraint system model Duo HRS-E/ERS or IWS restraint system with left-located strap opening | ○ | ○ | ○ |
| Headlights and LED lighting performance | ○ | ○ | ○ |
| LED floodlight headlights | ○ | ○ | ○ |
| Driver-adjusted speed limiter | ○ | ○ | ○ |
| STILL Safety Light 4Plus warning device | ○ | ○ | ○ |
| Curve Speed Control | ● | ● | ● |
| Load measuring | ○ | ○ | ○ |
| Panoramic mirror | ○ | ○ | ○ |
| Direction can be changed both left- and right-handed via mini-console | ○ | ○ | ○ |
| FleetManager: access authorisation, shock detection, reports | ○ | ○ | ○ |
| Overload detection | ○ | ○ | ○ |
| Roof sensor for indoor and outdoor speed control | ○ | ○ | ○ |
| Lifting height sensor for exact measurement of the lifting height with optional assistance functions | ○ | ○ | ○ |
| Stability assistance system Dynamic Load Control | ○ | ○ | ○ |
| Pre-shift check on the display for a guided safety check before starting to drive | ○ | ○ | ○ |
| Intelligent seat belt control with logic check | ● | ● | ● |
| Rockinger trailer coupling | ○ | ○ | ○ |
| Approved for road use | ○ | ○ | ○ |
| Surround View: 360° camera view | ○ | ○ | ○ |
| Explosion-proof variant | ○ | ○ | ○ |
| Safety Zone Light: warning light bars on the left and right of the vehicle | ○ | ○ | ○ |

● Standard ○ Option



STILL GmbH
Berzeliusstr. 10
22113 Hamburg
Germany
Tel.: +49 40 73 39 20 00
Fax: +49 40 73 39 20 01
info@still.de

For further information please visit
www.still.eu

STILL is certified in the following areas: Quality management, occupational safety, environmental protection and energy management.



first in intralogistics